



MONOCHROME | HOMES

£1,600 Per month

Brigade Place, Caterham, CR3 5ZU

Property Summary

OVERVIEW

A well presented two bedroom executive apartment situated on popular Village development in Caterham. Now available and ready to rent.

Disclaimer

"These details are prepared as a general guide only, and should not be relied upon as a basis to enter into a legal contract, or to commit expenditure. An interested party should consult their own surveyor, solicitor or other professionals before committing themselves to any expenditure or other legal commitments.

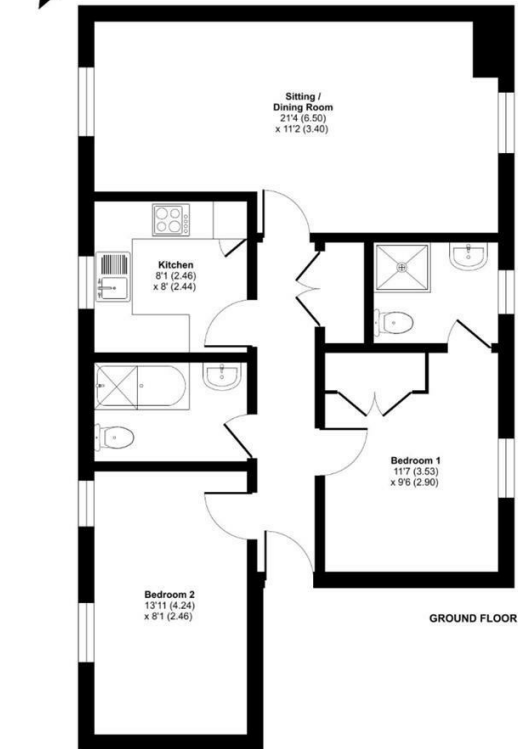
If any interested party wishes to rely upon any information from the agent, then a request should be made and specific written confirmation can be provided. The Agent will not be responsible for any verbal statement made by any member of staff, as only a specific written confirmation should be relied upon. The Agent will not be responsible for any loss other than when specific written confirmation has been requested."



MONOCHROME HOMES CATERHAM
MONOCHROME HOMES COULSDON
T: 01737 400 096 | E: HELLO@MONOCHROMEHOMES.CO.UK | MONOCHROMEHOMES.CO.UK

Brigade Place, Caterham, CR3

Approximate Area = 690 sq ft / 64 sq m
For identification only - Not to scale



Floor plan produced in accordance with RICS Property Measurement Standards incorporating International Property Measurement Standards (IPMS2 Residential). © richcom 2022. Produced for Park & Bailey REF: 800468

Energy Efficiency Rating

	Current	Potential
Very energy efficient - lower running costs		
(92 plus) A		
(81-91) B		
(69-80) C		
(55-68) D		
(39-54) E		
(21-38) F		
(1-20) G		
Not energy efficient - higher running costs		
England & Wales	EU Directive 2002/91/EC	

76

77

Environmental Impact (CO₂) Rating

	Current	Potential
Very environmentally friendly - lower CO ₂ emissions		
(92 plus) A		
(81-91) B		
(69-80) C		
(55-68) D		
(39-54) E		
(21-38) F		
(1-20) G		
Not environmentally friendly - higher CO ₂ emissions		
England & Wales	EU Directive 2002/91/EC	

76

77

Mc. MONOCHROME | HOMES